

# Doc M Contour 21+ Close Coupled Pack LH

## ILLUSTRATED

**S0683** Doc M Contour 21+ close coupled left hand corner pack, WC pan, water saving delay fill cistern with spatula lever, basin, grab rails, hinged support rail with toilet roll holder, seat no cover with retaining buffers, copper tails on TMV3 mixer tap

## ILLUSTRATED PRODUCT DETAILS

### Weights

**S0683** 69.65 KG

### Finishes

**S0683**  White (AC)

### Materials

**S0683** Mixed Material

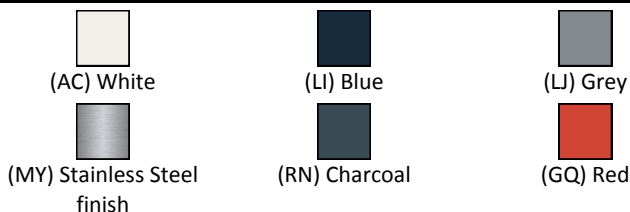
### Capacity

**S0683** 4.5 litres

### Flow rates

**S0683** 4 Litres per minute @ 3 bar pressure

## FINISH OPTIONS



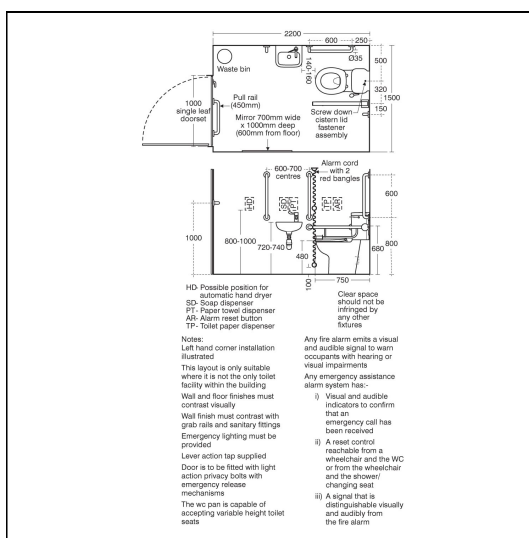
### Standards

Vitreous china to BS 3402

BS8300 compliant

### Special Notes

Doc M packs are available both right and left hand corner arrangement, illustrated is left hand arrangement. Supplied with layout drawings, detailing the fixing positions necessary for Doc M compliance



## ACCREDITATIONS



## FEATURES

