

CHROMIUM PLATED  
INLET TUBE (15MM COPPER)

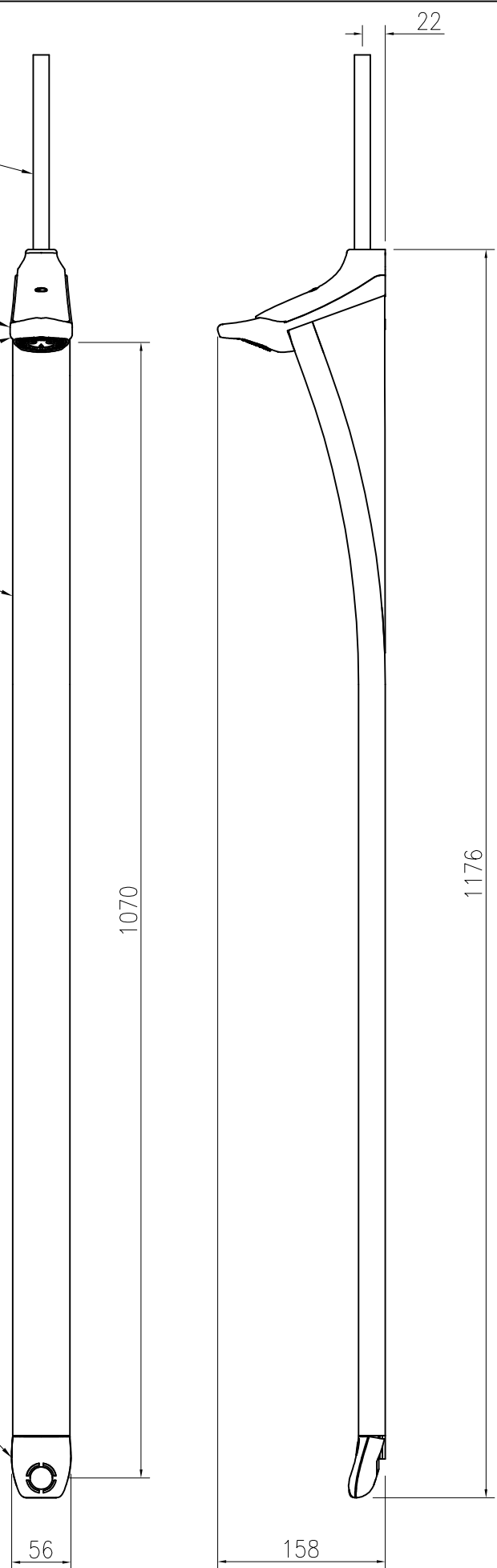
SHOWERHEAD: HOT FORGED BRASS  
(POLISHED CHROMIUM FINISH)

SHOWER SPRAYPLATE  
(CHOICE OF 4 COLOURS)

ANODISED ALUMINIUM EXTRUSION  
(NATURAL FINISH)

RECOMMENDED MOUNTING HEIGHT:  
SPRAY-PLATE 1950MM FROM FINISHED FLOOR

SUPER-LIGHT ACTION  
ACTUATOR PADDLE  
(CHOICE OF 4 COLOURS)



| HORNE SLIMLINE TIMED-FLOW SHOWER PANEL |  |
|--|--|
| SPRAYHEAD                              | ANTI-SCALE, 2 WAY                            |
| FLOW DURATION                          | 30 SECONDS OR 1 MINUTE VERSIONS AVAILABLE    |
| FLOW RATE                              | 6, 8, OR 10 LITRES/MINUTE VERSIONS AVAILABLE |
| WATER INLET                            | BLENDED, 15mm COPPER PIPE THRU' TOP OF PANEL |
| THERMOSTATIC VALVE                     | NONE SUPPLIED, REQUIRES BLENDED WATER SUPPLY |
| USER CONTROLS                          | PUSH BUTTON TIMED FLOW CONTROL ONLY          |
| STRAINER                               | INTEGRAL FINE MESH STRAINER                  |
| PARTS LIST 6029                        | CUSTOMER DRAWING 10397                       |

**FINISH:** NATURAL ANODISED ALUMINIUM

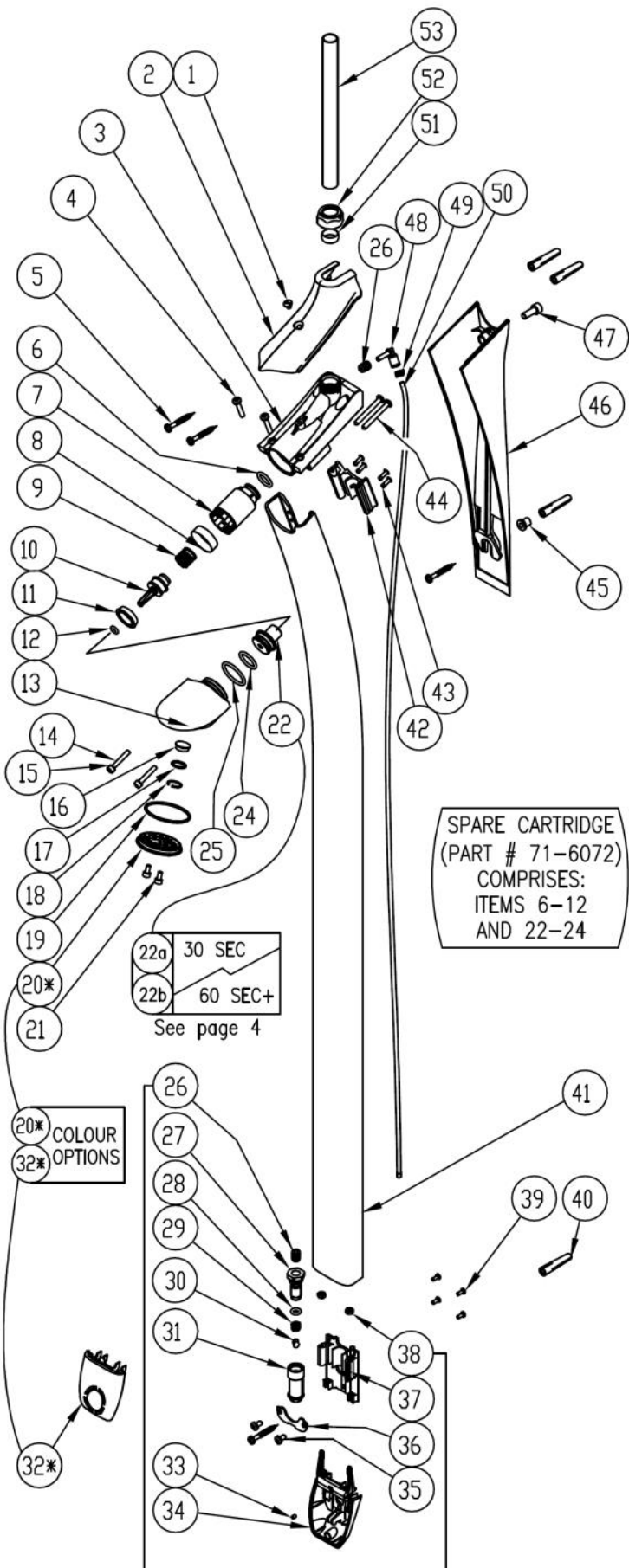
HORNE ENGINEERING LTD.  
JOHNSTONE  
RENFREWSHIRE

**PRODUCT :**  
HORNE SLIMLINE SHOWER PANEL

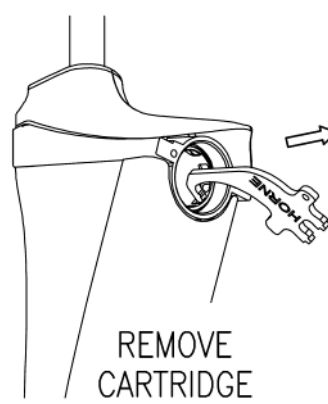
|         |              |
|---------|--------------|
| SCALE   | DO NOT SCALE |
| DRAWN   | MJ 27/8/2012 |
| CHECKED |              |
| ISSUE   | 1            |

DR'G. No. 10397

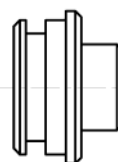
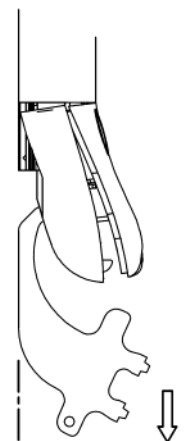
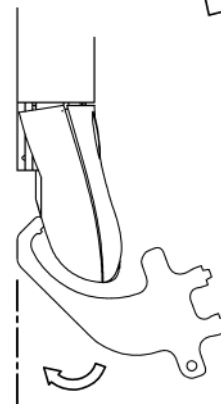
## HORNE DUŠO SHOWER COLUMN - SPARE PARTS



CHANGE  
 CARTRIDGE  
 (P/N: 71-6072)  
 EVERY 3 YEARS



SPECIAL TOOL  
 P/N: 21-6071



22a (~30 SEC)  
 P/N: 23-6073

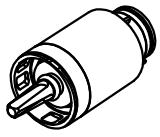


22b (60 SEC+)  
 P/N: 23-6043

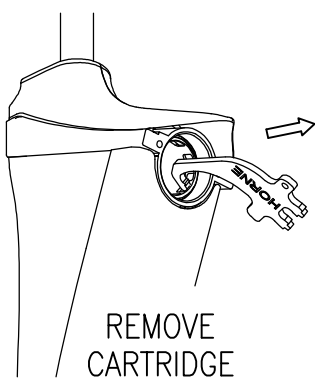
Please refer to the drawing overleaf for balloon numbers. For unlisted balloon numbers please contact the factory on 01505 321455 to obtain part number, making sure you refer to our drawing number D11314 Rev 3.

| ITEM NUMBER | DESCRIPTION  | PART NUMBER |
|-------------|--|-------------|
| n/a         | Release tool   | 21-6071     |
| 1           | Top cover retaining screw  | 23-6062     |
| 2           | Top cover  | 23-6056     |
| 4           | Self tapping screw   | 41-6065     |
| 20          | Spray plate assembly - Black   | 71-5998     |
| 20          | Spray plate assembly - Aqua Blue                                     | 71-5998-AB  |
| 20          | Spray plate assembly - Grey  | 71-5998-VG  |
| 20          | Spray plate assembly - Pearl   | 71-5998-AP  |
| 20          | Spray plate assembly - Yellow  | 71-5998-CY  |
| 19          | Spray plate O-ring seal  | 42-5996     |
| 21          | Spray plate retaining screw (2 required)                             | 41-5891     |
| 6-12, 22-24 | Spare Timed Flow Control (TFC) cartridge assembly 60 second duration | 71-6072     |
| 6-12, 22-24 | Spare Timed Flow Control (TFC) cartridge assembly 30 second duration | 71-6119     |
| 22a         | Obturator seat - 30 second duration                                  | 23-6073     |
| 22b         | Obturator seat - 60 second duration                                  | 23-6043     |
| 32          | Actuator paddle cover - Black  | 23-6038     |
| 32          | Actuator paddle cover - Aqua Blue                                    | 23-6038-AB  |
| 32          | Actuator paddle cover - Grey   | 23-6038-VG  |
| 32          | Actuator paddle cover - Pearl  | 23-6038-AP  |
| 32          | Actuator paddle cover - Yellow                                       | 23-6038-CY  |
| 26-38       | Paddle assembly  | 71-6074     |
| 26          | Push-in cartridge ( <i>Design Rev 2. onwards</i> )                   | 43-6131     |
| 39          | M3 x 4 Countersunk screw   | 41-6069     |
| 40          | Fitting kit (includes items 1, 5, 40, 45, 51, 52)                    | 6060        |
| 48          | 4mm M/F Angle push-fit ( <i>Design Rev 2. onwards</i> )              | 43-6132     |
| 49          | Tamper-proof clip ( <i>Design Rev 2. onwards</i> )                   | 23-6140     |
| 26, 48, 49  | Elbow connector, male threaded ( <i>Legacy, Design Rev. 1</i> )      | 43-6045     |
| 50          | Flexible pilot tube  | 23-6047     |

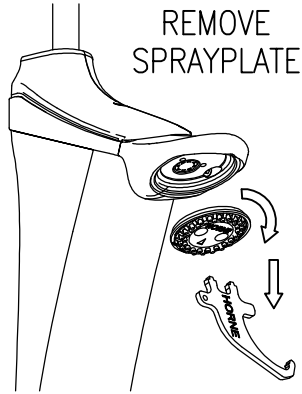
# MAINTENANCE



CHANGE  
CARTRIDGE  
(P/N: 71-6072)  
EVERY 3 YEARS



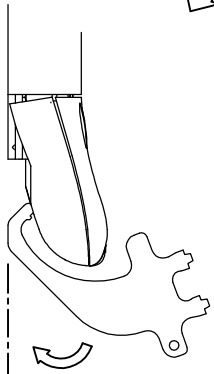
REMOVE  
CARTRIDGE



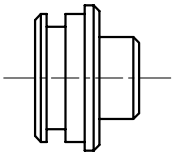
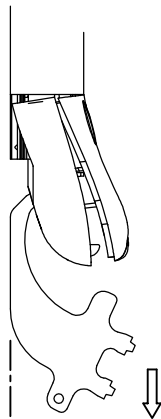
REMOVE  
SPRAYPLATE



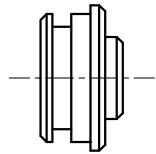
SPECIAL TOOL  
P/N: 21-6071



REMOVE  
COVER



22a (~30 SEC)  
P/N: 23-6073



22b (60 SEC+)  
P/N: 23-6043

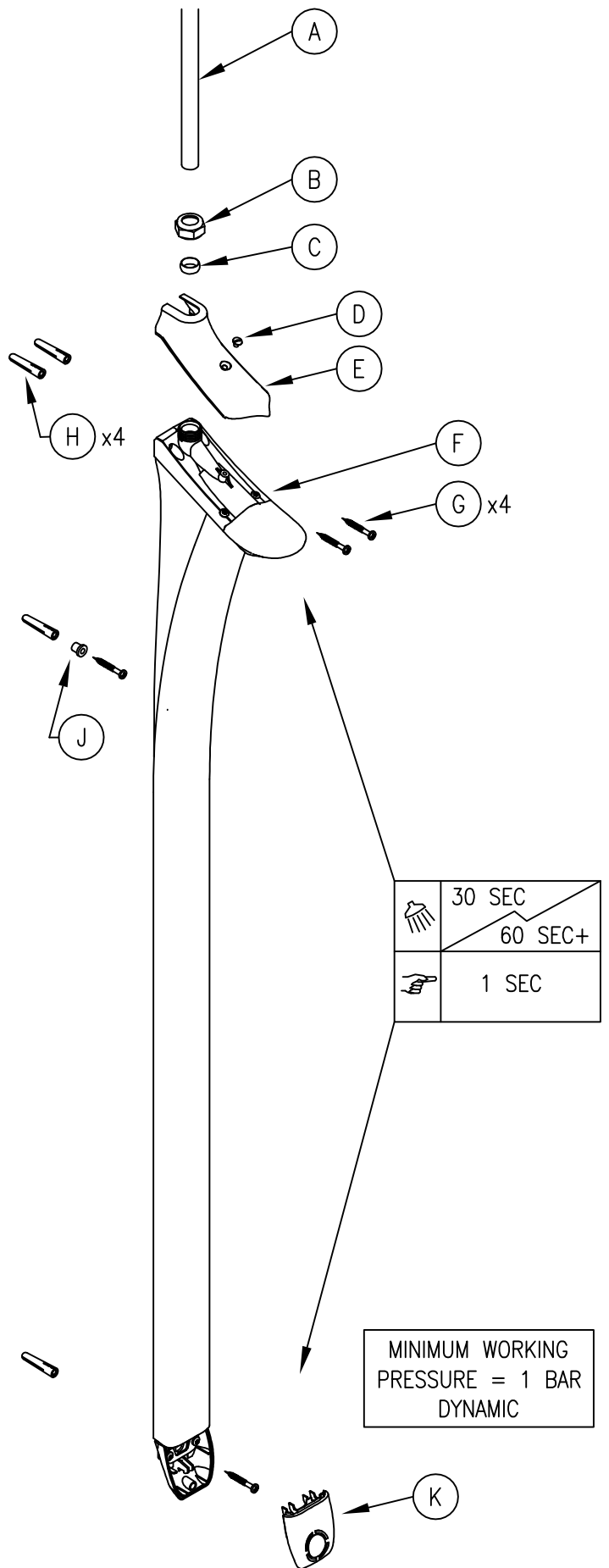
HORNE ENGINEERING LTD.  
PO BOX 7, RANKINE STREET  
JOHNSTONE, RENFREWSHIRE.  
PA5 8BD. UK.  
T: +44 1505 321 455  
F: +44 1505 336 287  
W: WWW.HORNE.CO.UK

D11314 - REV.2



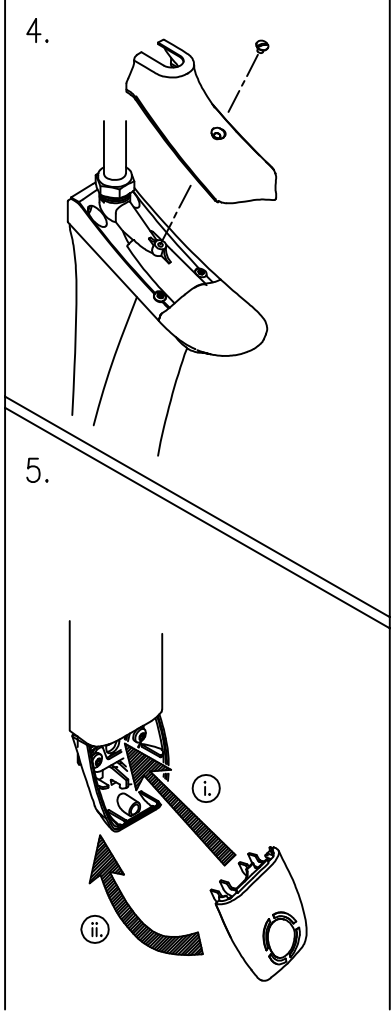
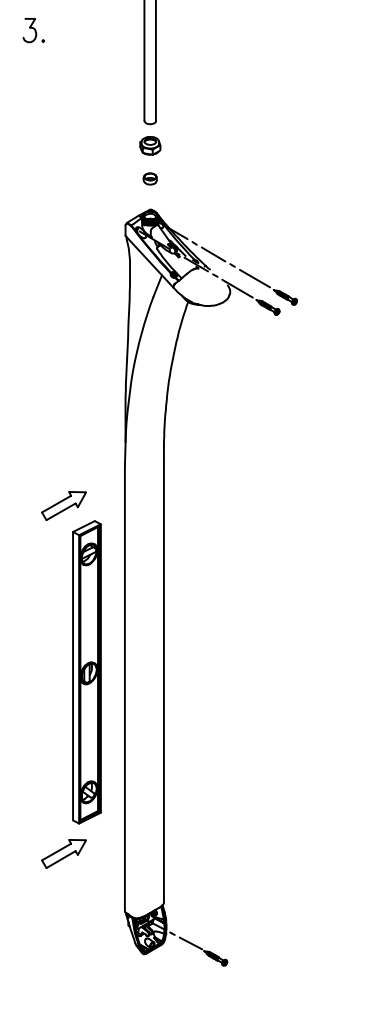
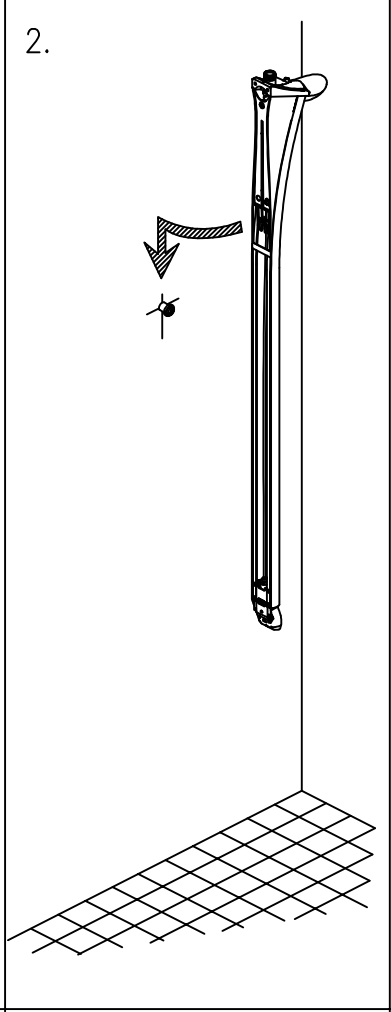
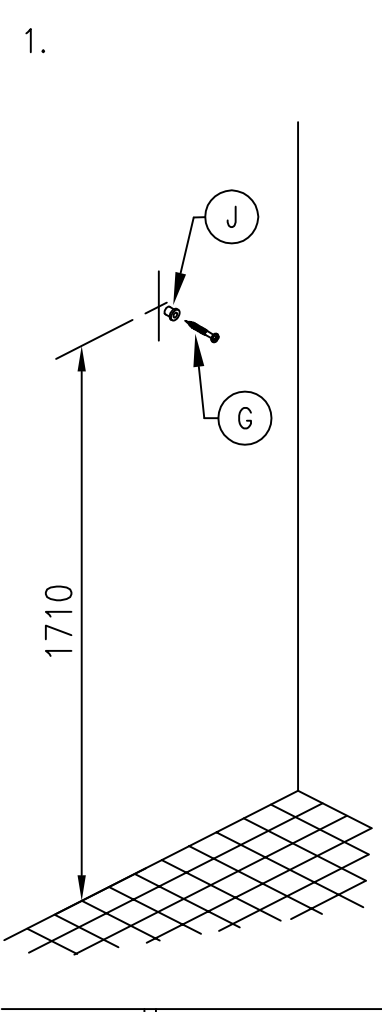
# Dușo

["doosho"]

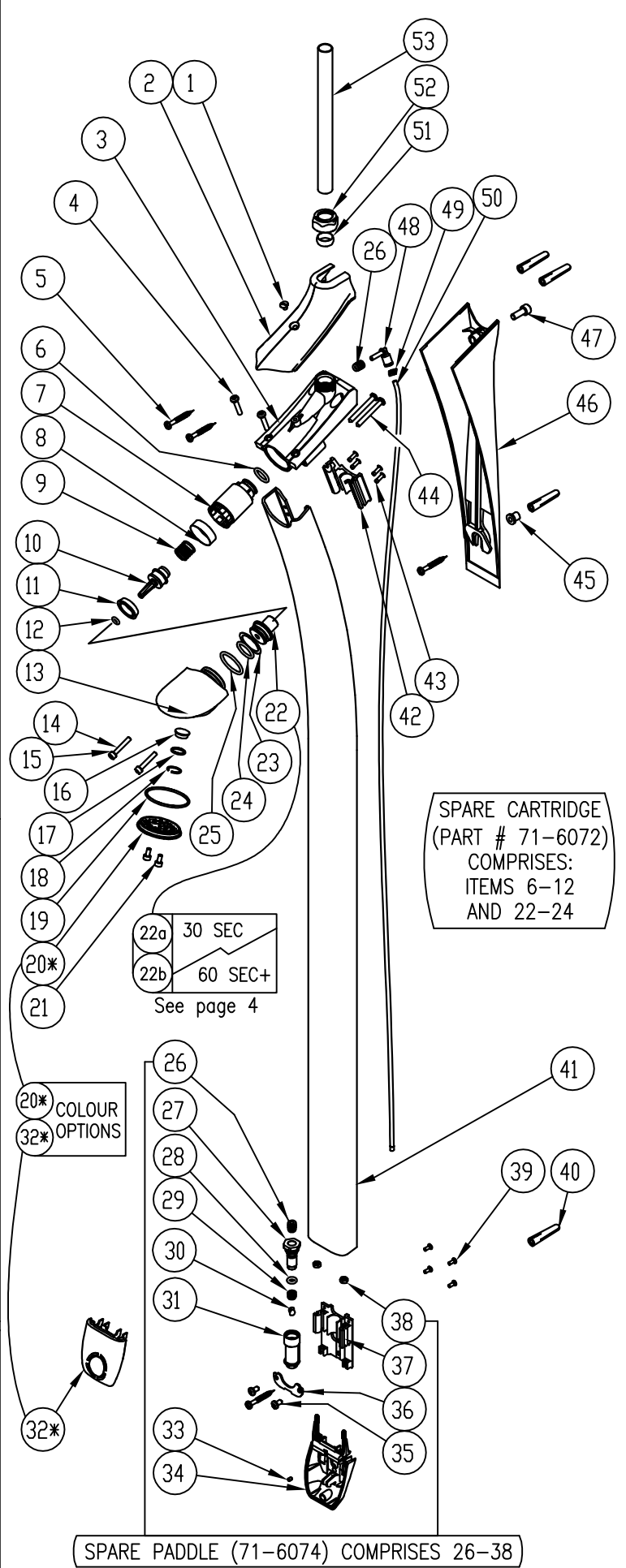


FIND THESE PARTS IN THE BOX...

# INSTALLATION



# SPARE PARTS



TO ORDER SPARES QUOTE D11314 REV.2, & BALLOON NUMBER